



# MONTHLY MEMBERSHIP PROGRESS REPORT

District 7 N

Results as of: 7/31/2016

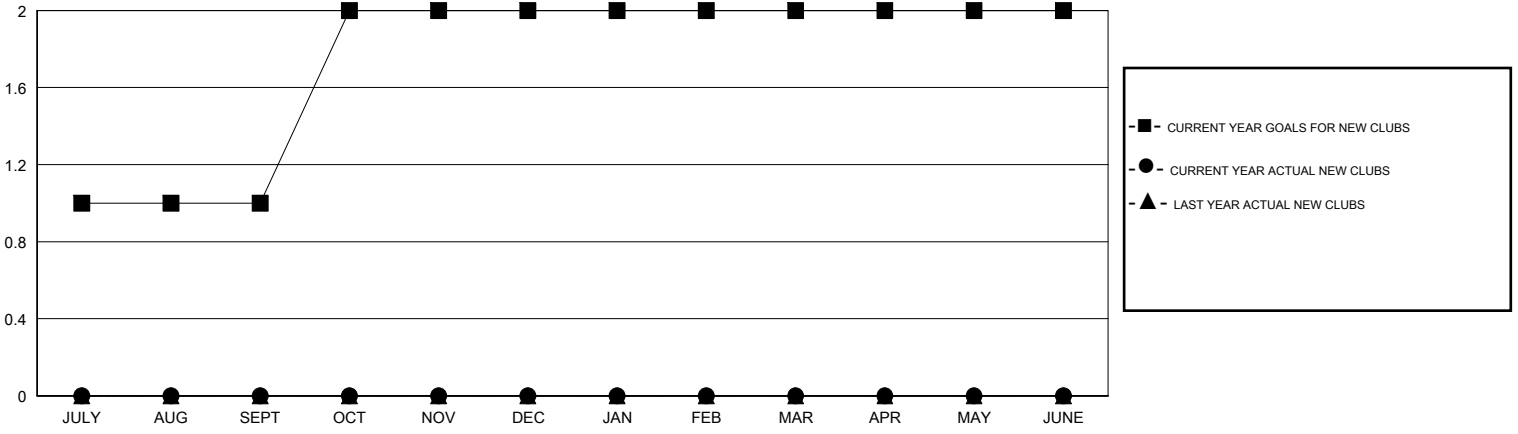
GMT: HAL GRIFFIN

LOCATION ARKANSAS

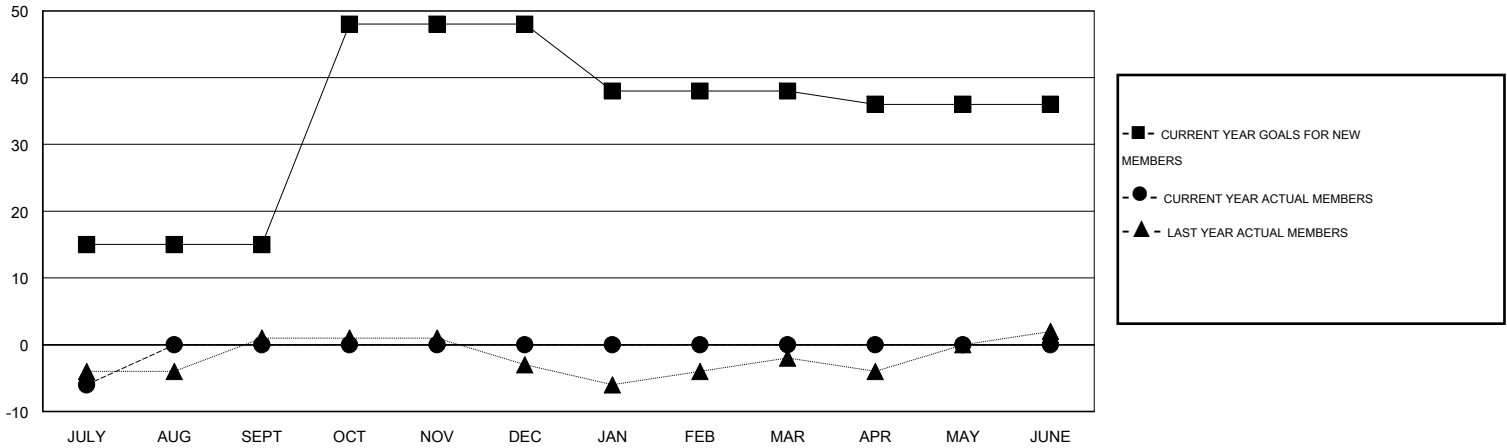
GMT CA 1

Clubs					Members				
RESULTS FOR 2016-2017					RESULTS FOR 2016-2017				
QUARTER	NEW CLUB GOAL	NEW CLUBS	DROPPED CLUBS	NET GAIN/LOSS	QUARTER	NEW MEMBER GOAL	CHARTER AND NEW MEMBERS ADDED	DROPPED MEMBERS	NET GAIN/LOSS
JULY/AUG/SEPT	1	0	0	0	JULY/AUG/SEPT	15	3	9	-6
OCT/NOV/DEC	1	0	0	0	OCT/NOV/DEC	33	0	0	0
JAN/FEB/MAR	0	0	0	0	JAN/FEB/MAR	-10	0	0	0
APR/MAY/JUNE	0	0	0	0	APR/MAY/JUNE	-2	0	0	0

GOALS AND ACTUAL NEW CLUBS CUMULATIVE



GOALS AND ACTUAL MEMBERS CUMULATIVE



DROPPED CLUBS: 0	3 CLUBS OF 34 ADDED 1 OR MORE NEW MEMBERS	<u>GENDER DISTRIBUTION</u>	
<u>DROPPED MEMBERS</u>		MALE	461 (62.05%)
DECEASED	3	FEMALE	282 (37.95%)
CLUB CANCELLED	0	<u>FAMILY UNIT MEMBERS</u> 151	
OTHER	6	<u>HEAD OF HOUSEHOLD</u> 75	
TOTAL	9	<u>NON-HEAD OF HOUSEHOLD</u> 76	

[CLICK HERE FOR HEALTH ASSESSMENT DATA](#)